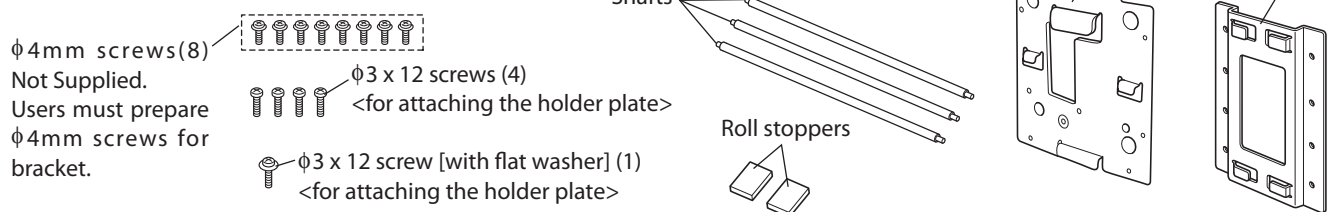


Attaching the TSP800II Wall Mounting Bracket

1. Unpacking : Confirm that all accessories are included.



2. Attaching procedure :

Precautions when mounting

- Ensure that power that is supplied to the printer and that all devices connected to the printer have been switched OFF and that the cables have been unplugged before starting the modification. If the AC adapter is connected to the printer, unplug it from the main socket.
- Select a location where the unit will not be exposed to moisture or physical shocks. Make sure that the wall is wide enough to mount the brackets.
- Carefully select screws for mounting the bracket to the wall. These screws must be strong enough to hold the printer and must be long enough to completely enter the wall to provide a secure mounting. Remember that Star accepts no responsibility for damage resulting from the printer falling due to improper mounting.
- The weight of the printer, including a roll of paper with the largest diameter, is approximately 2.9 kg.
- The screws for mounting the bracket must have both a shear and tensile strength capable of withstanding a load of 12 kgf (118 N) or more. It is recommended that anchor nuts be used.
- A screw diameter of 4 mm is recommended.
- Always use all eight (8) screw holes in the mounting bracket when securing the mounting bracket to the wall.
- Mount the bracket to the wall so that its mounting accuracy is within a range of $\pm 2^\circ$ to the vertical direction.
- The wall used for mounting should be $90^\circ \pm 2^\circ$ in reference to the horizontal direction.

2-1. Specifications of the wall mounting bracket

Dimensions	121 × 168 × 14.5 mm (Width × Height × Depth)		
Weight	Approx. 0.27 kg.		
Screws for wall mounting bracket	Wood structure wall	The eight (8) screws used must have both a shear and tensile strength capable of withstanding a load of 12 kgf (118 N) or more.	Use commercially available screws that have sufficient strength to withstand the weight of the main unit.
	Concrete wall	The anchor nuts used must have both a shear and tensile strength capable of withstanding a load of 12 kgf (118 N) or more.	

2-2. Mounting the bracket for the wall mount model

- ① Make sure there is enough room for the printer, particularly in the front of the printer when its cover is opened.
- ② As shown in the illustration to the right, place the mounting bracket against the wall where the printer is to be mounted and mark the positions of the screw holes.
- ③ Drill holes at the locations marked.
- ④ Secure the bracket in place using screws with a diameter of 4 mm.

Note: Screws are not included in the package. Prepare the screws that can be used on the type of wall for mounting.

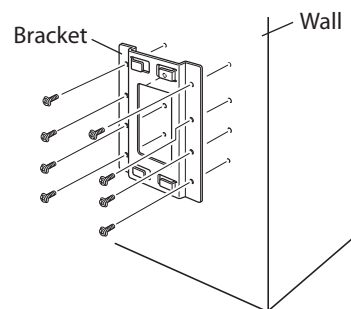


fig.1 Attaching the bracket

Wood structure wall	Concrete wall
<ul style="list-style-type: none"> • Locate the beams in the wall and mount using them. • Do not tighten the screws or anchors to locations with one wall sheet. Always make sure that the screws penetrate the beams. (This is so the weight of the printer can be supported.) 	<ul style="list-style-type: none"> • Drive the anchor nuts into the wall and tighten the screws.

2-3. Attaching the shafts

Attach the three shafts.

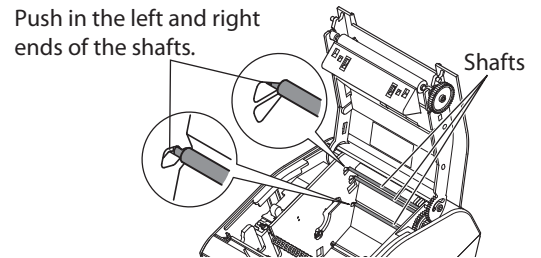


fig.2 Attaching the shafts

2-4. Attaching the roll stoppers

Wipe the area into which the roll stoppers will be affixed in order to remove any grime; then, affix the roll stoppers. The positions for affixing them will vary depending on the paper width.

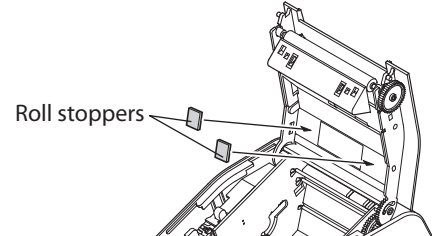


fig.3 Attaching the roll stoppers

2-5. Removing the tension bar unit

Use a small slot screwdriver to remove the clips at both ends of the bar to remove the tension bar unit.

Note: If the paper thickness is less than 100 μ m, you do not need to remove the tension bar unit.

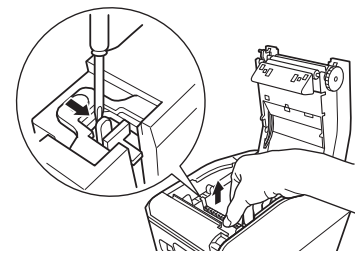


fig.4 Removing the tension bar unit

2-6. Attaching the holder plate

- ① Remove the screw from the printer as shown in the illustration.
- ② Attach the holding plate to the printer. Then tighten the four $\phi 3$ screws that were supplied to secure it in place.

The screw fitted with a flat washer is to be used in the place from which the screw was previously removed.

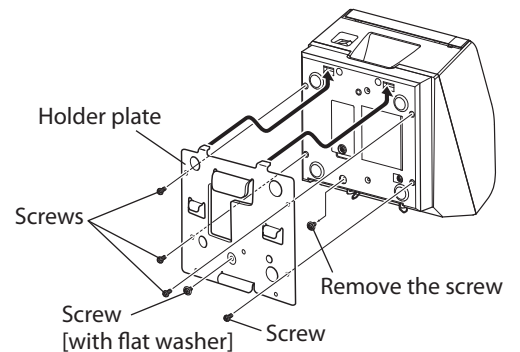


fig.5 Attaching the holder plate

2-7. Setting the printer onto the bracket

- ① Insert the two hooks on the holding plate through the two holes on the stand. Four different positions are available for insertion, so select the required position accordingly.
- ② Once the hooks have been inserted into the holes, fix the printer onto the stand with the two screws.

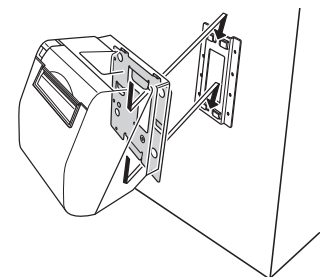


fig.6 Setting the printer onto the bracket

2-8. Setting the roll paper

- ① Push the cover open lever, and open the printer cover.
- ② Insert the roll paper as shown.

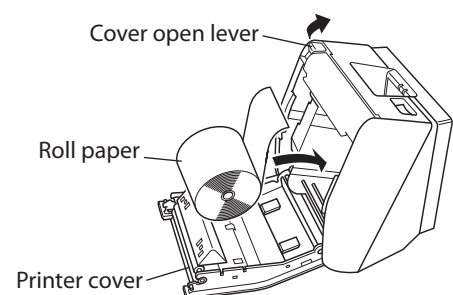


fig.7 Setting the roll paper